



OMEGA
COMMUNICATIONS LTD.

Omega Communications Ltd.
p: 250 860 8016
toll free: 888 860 8016
e: wireless@omegacom.ca
<http://omegacom.ca>



Advanced FleetReplay™ Fleet Management Series

Harness The Power...Connect, Protect, Recover & Manage.





Advanced FleetReplay™ Fleet Management Series

TitanTracker™ Dashboard interface is a world class fleet management mapping website. The Titan interface combines the latest in technology with an intuitive, easy to use design. By using the interface our clients can easily monitor their assets whether across the street or across the globe. Through Titan, you will gain access to fleet management tools that will help you become more efficient and be better able to manage your fleet. Whether you are looking to remotely monitor engine hours for maintenance scheduling or your goal is to manage vehicle speeds within a plant site or access road. Titan knows so you know...

Advanced FleetReplay™ Fleet Management Series

Applications

Mobile Work Force: Smart Phone Tracker

- Smart Phone Application Download
- Displays Real-Time Locations of Entire Work Force
- Worker Search Tool for more Efficient Dispatching
- Historical Breadcrumbs
- Arsenal of Managerial "Location Based" Tabled Reports

Fixed & Mobile Non-Powered Assets

- Last Known Location
- Monitor Sensors Remotely
- Rugged Construction
- 24/7 Boundary Monitoring
- Location Entrance/Exit Alerts

Fleet Vehicles Monitoring

- Real-Time Locations
- Speed Monitoring: Highways, Plant Sites & Lease Roads
- Excessive Engine Idling
- Aggressive Driving
- Afterhours Usage / Violations
- Seatbelt Usage & Violation Reports
- Historical Replay & Government Fuel Rebate Report Aids
- PTO Detection & Usage Reporting

Heavy Duty Equipment Monitoring

- Location & Engine Hours Reports
- Service & Maintenance Scheduling
- Engine Hour Updating Intervals
- Back-Office Integrations: Location, Hour and Odometer Readings
- 24/7 Fault Monitoring



Dashboards & App

Titan's mapping dashboard interface is part of a "World Class" end to end GPS fleet management solution. The power behind Titan's web based and mobile Smartphone dashboards are how their cross compatible with the entire line of Titan's industry leading GPS tracking hardware solutions

Website Dashboard: Enterprise Level Managerial Tools

TitanTracker™ has an intuitive set of enterprise level tools that have been specifically designed to overcome the hurdles of displaying, grouping and tracking hundreds or even thousands of vehicles on the map.

- Asset List Display Tool
- Asset Search and Labeling Tool
- Sub-User Creation Tool
- Landmark Creation Tool
- Grouping Tool: Assets / Users / Landmarks
- Back office Integration Live Data Feed
- Custom Alert Creation Tool
- Historical Playback Tool
- Arsenal of Tabled Managerial Reports
- Subscription Email Report Tool
- Service & Maintenance Scheduling Tool



Smart Phone Visual Tools

- On-Demand Locate
- Live Vehicle Position Updating
- Real-Time Last Known Location
- Vehicle controls: Starter Kill, Doors Locks, etc
- 24 Hrs Playback History
- Street View
- Compatible with iPhone, BlackBerry & Android powered Smartphones

Notification SMS or Email Alerts

- Instant Real-Time notifications
- Aggressive Driving Threshold Breached
- Vehicle Entering Job Site
- Afterhours Detection of PTO Usage
- Vehicle Service & Maintenance Reminder
- Breach of a Boundary Restriction
- Compatible with any Smartphone

One mapping platform and web interface that is cross compatible for Titan's entire line of industry leading GPS Hardware solutions.





Energy Sector Key Features

PatchMaps™ Oilfield Mapping

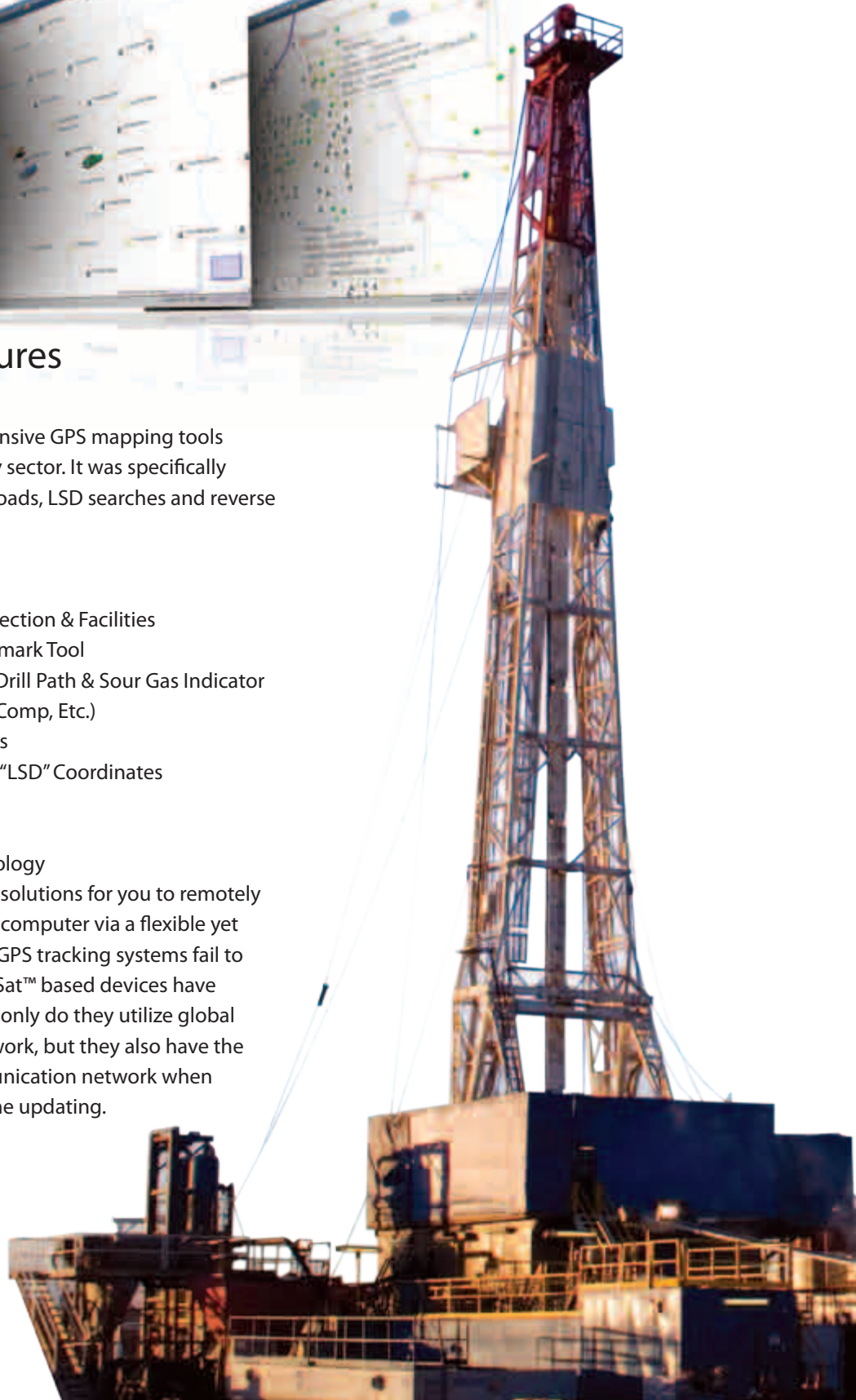
PatchMaps™ is one of the most comprehensive GPS mapping tools available for the western Canadian energy sector. It was specifically designed to deliver the ultimate in lease roads, LSD searches and reverse geo-coding reporting tools.

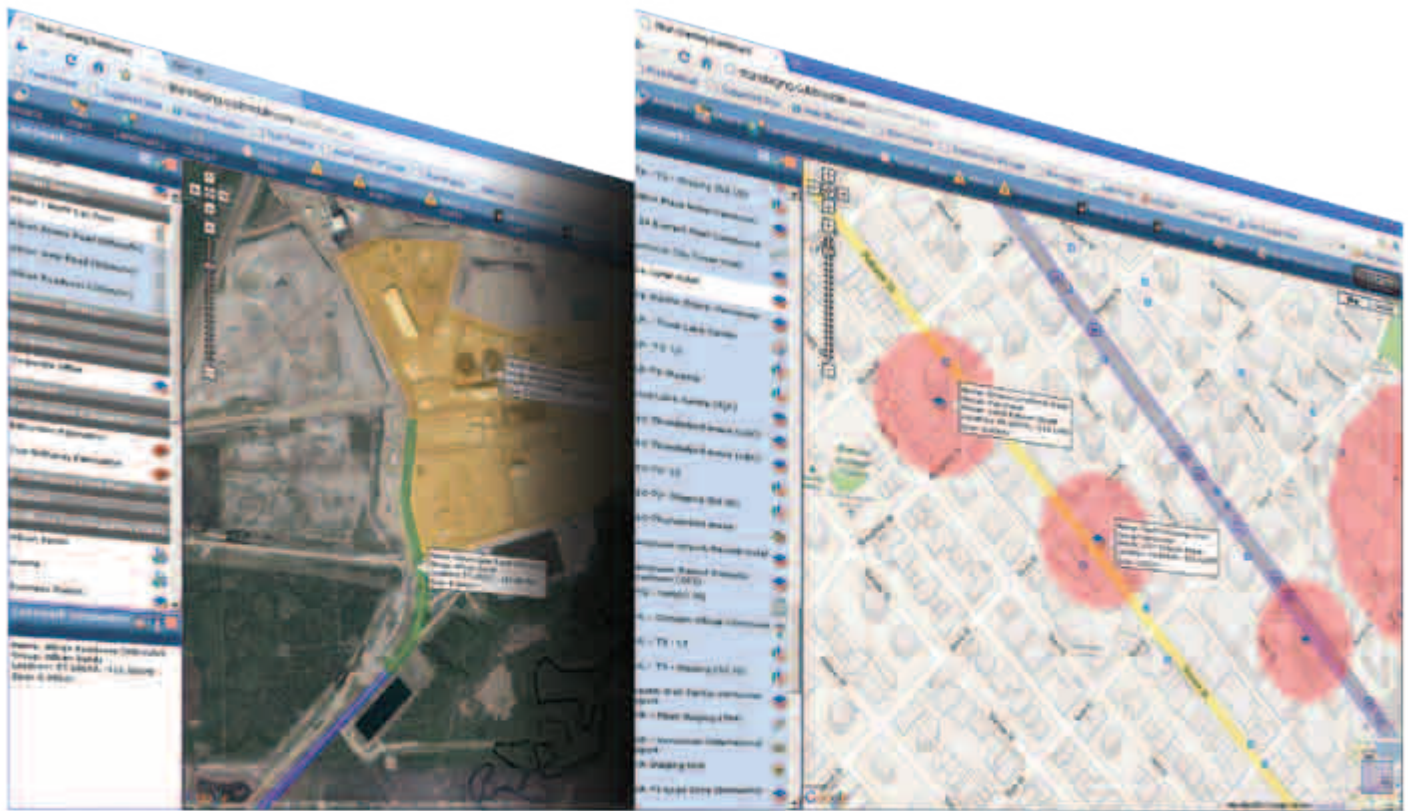
LSD Grid Mapping

- Search Tool: LSD, PNG, Wellsites, 1/4 Section & Facilities
- Instant Right Click LSD Locate & Landmark Tool
- Wellsites: License Number, Operator, Drill Path & Sour Gas Indicator
- Facilities: LSD, Operator & Type (Batt, Comp, Etc.)
- Private Lease Roads Mapping Overlays
- Vehicle Stop Locations provided with "LSD" Coordinates
- Provinces: Northeast BC, AB, SK

Remote Area Monitoring: TrueSat™ Technology

TitanTracker™ offers a variety of hardware solutions for you to remotely monitor your fleet's movements from any computer via a flexible yet easy-to-use website. In many cases, most GPS tracking systems fail to work in cellular dead zone areas; our TrueSat™ based devices have what we call "dual mode" technology. Not only do they utilize global positioning satellites and the cellular network, but they also have the intelligence to switch to a satellite communication network when needed. This allows for near 100% real-time updating.





Location Based Intelligence

Location Based Intelligence:

The TitanTracker™ Landmark tool allows you to identify, label and create custom shaped boundaries over an unlimited number of locations such as plant sites, access roads and entry gates to project locations. The ability to mark these specific locations is ideal for companies looking to define and monitor vehicle speeds, boundary restrictions, or record entrance and exit times.

- Record In & Out Times for Specific Locations
- 24/7 Boundary Monitoring
- Location Entrance Notifications
- Organize Locations by Speed Zones or Projects
- Define Speed Limits at Strategic Locations

Location Entrance Notification

Maximize your company's potential by creating an automated email notification system with TitanTracker's comprehensive "Custom Alert" tool. You will have the ability to create global alert rules for your personnel while simultaneously sending independent emails to your field superintendents or front line managers.

24/7 Boundary Monitoring

The TitanTracker™ Mapping Dashboard website can be used to keep track of locations that are important to your business and send "Custom Alerts" based on various activities. In addition, you will have the ability to create boundary rules and define high priority breach alerts based upon any asset, its location, day and/or time. These alerts can then be forwarded to a group of emails or even sent via text message to multiple cell phones.

Location Based Intelligence Features & Fleet Analytic Reporting Tools

Fleet Analytic Reporting Tools

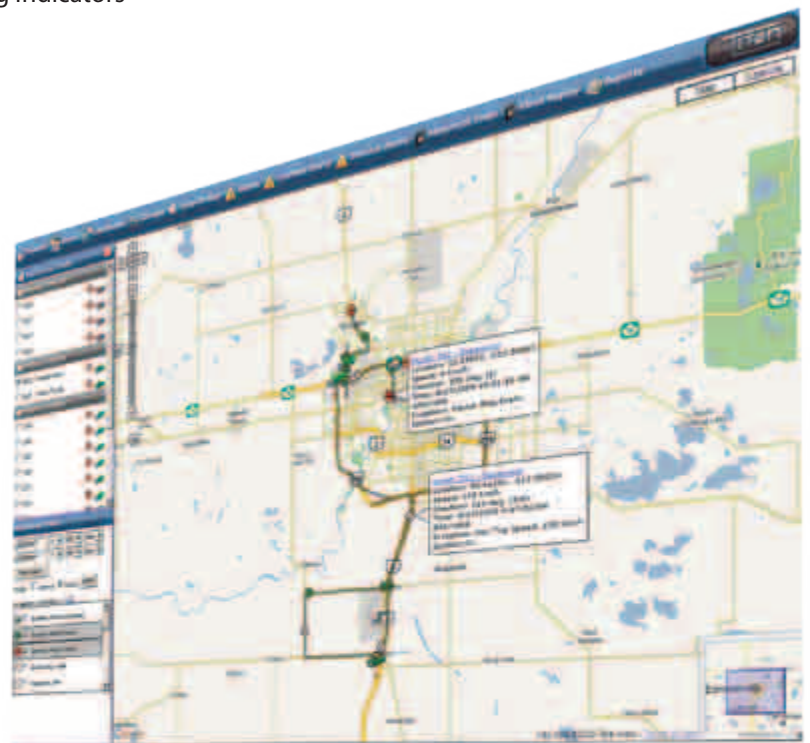
TitanTracker's fleet analytic reporting tools enable managers to precisely record, monitor and manage their mobile asset's movements throughout the day. TitanTracker's™ robust visual historical playback tools and an arsenal of fleet and vehicle managerial tabled reports are second to none in the industry.



Information is Power.....

- Confirm Departure and Arrival Times
- Validate Billing & Hours Worked
- Audit Vehicle Movement History
- Equipment Utilization Reporting
- Report After Hours Equipment Usage
- Monitor Your Fleet's "KPDI's" Key Performance Driving Indicators

Fleet Analytic Reporting Tools	Available
Visual Historical Reporting Tools	
24 Hr WebTrail™ Request	✓
Historical Trails Mapping Tool	✓
FleetReplay™ Playback Tool	✓
Vehicle Web Follow Tool	✓
Real-Time WebTrail™ Drop	✓
Managerial Tabled Reports	
Detailed Tabled Reports	
Detailed: Start / Stop by Location	✓
Detailed: Assets by Location	✓
Detailed: Over-Speed by Location	✓
Detailed: Excessive Idling by Location	✓
Detailed: Inputs by Location	✓
Detailed: Service & Maintenance	✓
Summary Tabled Reports	
Summary: Overview by Vehicle	✓
Summary: Aggressive Driving by Vehicle	✓
Summary: Landmark Stats by Vehicle	✓
Advanced Pro-Pack Summary Reports *	
Advanced: Fleet Driving Summary	Pro/Elite
Advanced: Vehicle Idling Summary	Pro/Elite
Advanced: Vehicle Max-Trip Speed Summary	Pro/Elite
Advanced: Vehicle Over-Speed Summary	Pro/Elite



Report Subscription Tool
Select from one of 14 + TitanTracker™ fleet and vehicle managerial reports to be emailed automatically to you on an hourly, daily or weekly basis.

* Limited to Pro & Elite airtime plans only.